

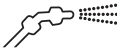





## TECHNICAL SPECIFICATIONS |

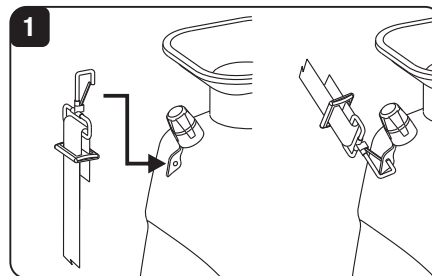
MODEL		Handy 5L	Handy 7L	Handy 10L
MAXIMUM CAPACITY		5 L	7 L	10 L
SPRAY TYPE – RAINDROP		400 cc/min	400 cc/min	400 cc/min
SPRAY TYPE – JET		800 cc/min	800 cc/min	800 cc/min
WAND LENGTH		38 cm	42 cm	42 cm

## ASSEMBLING THE SPRAYER |

### Installing the Carrying Strap

To install the carrying strap on the sprayer, press the hook to open, then insert the tip of the hook into the hole where you want to install the strap, as shown in Illustration 1. Repeat these steps for the hook on the other end of the strap.

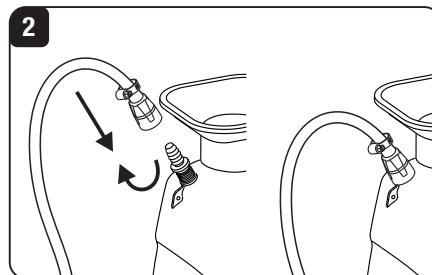
After the strap is attached to the container, adjust its length using the buckles to the most comfortable carrying position.



## Hose assembly

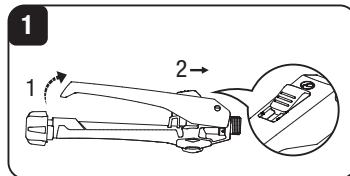
The hose of the sprayer comes pre-assembled and ready to install by screwing into the container opening, as shown in Illustration 2.

**Note:** Lubricate the gaskets of your machine periodically with grease. Do not overtighten the gaskets or plastic parts.

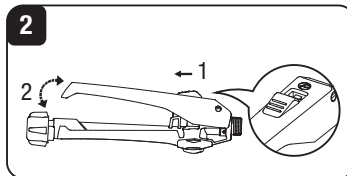


## Using the trigger valve

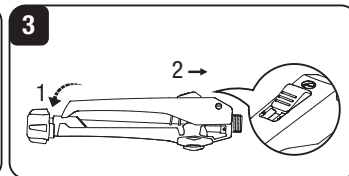
The trigger valve releases the liquid from the sprayer and can be operated in any of its three positions:



1. Locked with a safety lock, which prevents the passage of liquid and avoids accidental activation of the trigger valve.



2. Freely activated, which allows or blocks liquid flow by depressing or releasing the trigger valve handle as required.

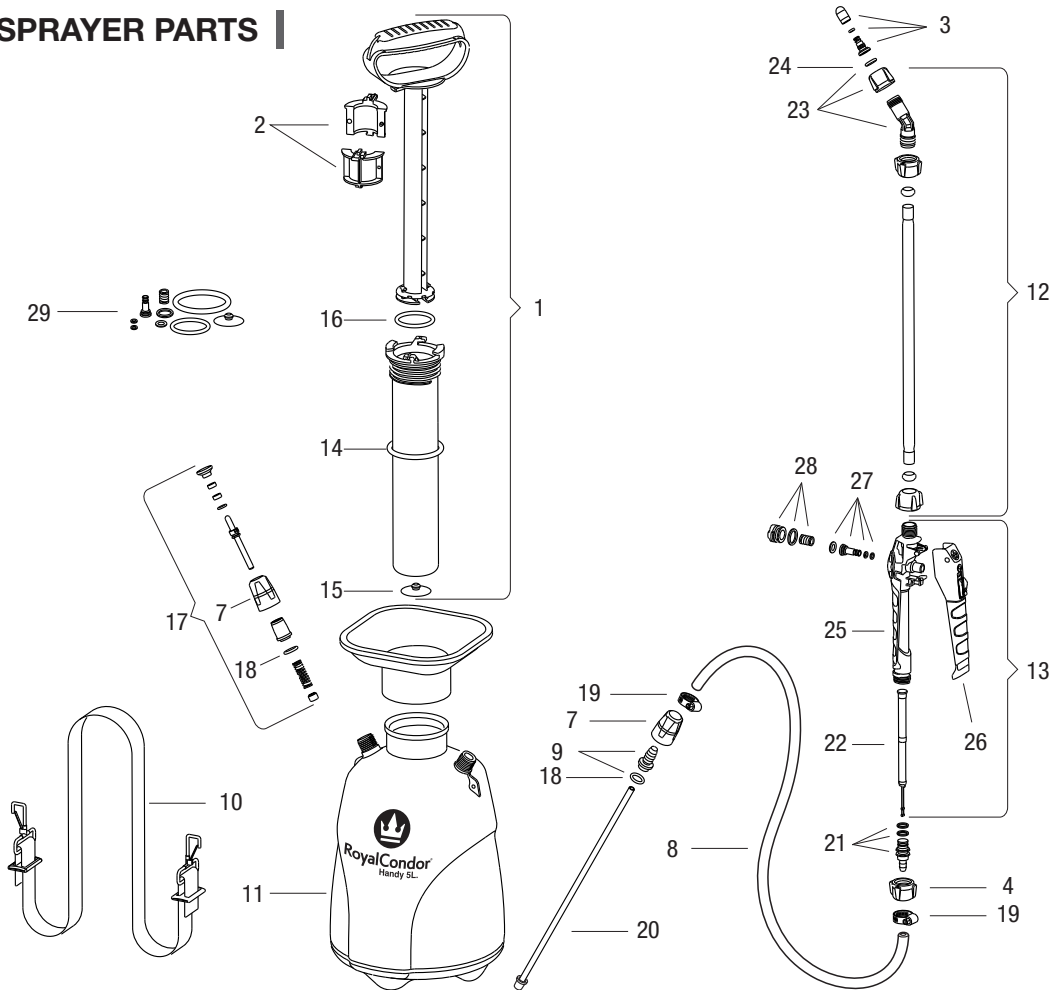


3. Open with a safety lock, which is ideal for long workdays because it can lock the trigger valve in place and allow the constant flow of liquid.



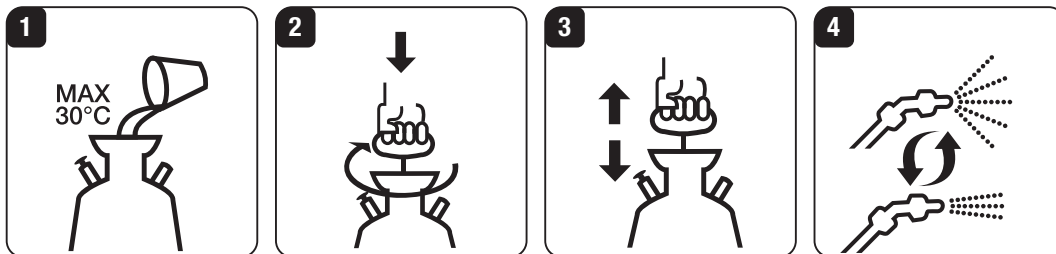
**IMPORTANT:** Frequently lubricate the trigger valve to avoid leaks and ensure optimum sprayer performance.

# SPRAYER PARTS



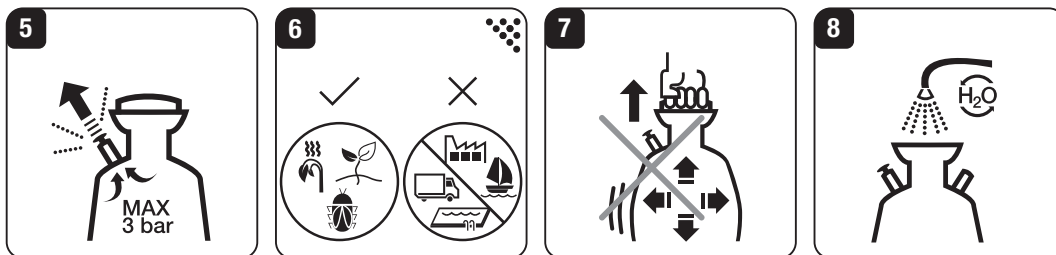
N°	SPARE PART REFERENCE NUMBER	DESCRIPTION
1	HB-1	Complete pump system
2	HB-1B	Manuals
3	RC-350B151X	Brass nozzle 400cc/40psi
4	RA-829X	Plastic butterfly nut
7	HB-3	Nut
8	RHB-4	Assembled output hose
9	RHB-3A	Hose fitting
10	HB-9	Strap
11	HB-11 / HB-11A / HB-11B	Sprayer container 5L /7L /10 L
12	RHB-346ELFX / RHB-347ELFX	Wand
13	RC-920ELPNX	Assembled trigger valve
14	HB-1E	Pump O-ring
15	HB-1C	Piston valve
16	HB-1D	Piston O-ring
17	HB-8A-8B	Relief valve
18	HB-8B	Connector O-ring
19	RMI-804X	Worm drive hose clamp
20	RHB-12 / RHB-13 / RHB-14	Suction pipe 5L /7L/10 L
21	RC-125NX	Output connector 3/8
22	RC-933LNX	Trigger valve long filter
23	RG-819LPEX	Nozzle elbow
24	RC-327X	Nozzle elbow O-ring
25	RC-921LPNX	Trigger valve body
26	RC-930ENX	Trigger valve handle
27	RC-923ENX	Assembled plastic spindle
28	RC-922NX	Trigger valve plug
29	HB-5	Spare parts kit

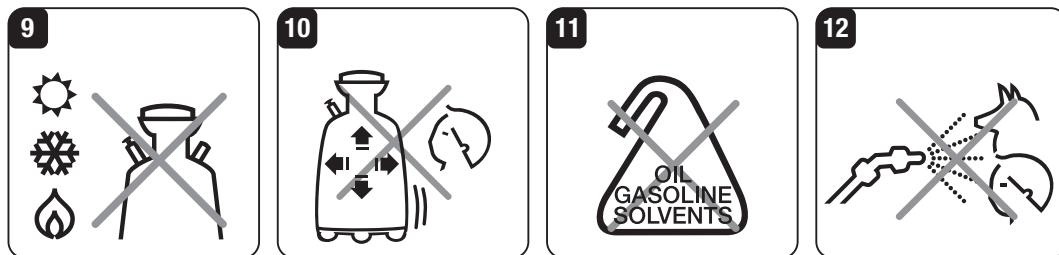
## OPERATING INSTRUCTIONS |



Fill the container only to the appropriate level as marked. Never fill the container completely; always leave enough space for the compressed air (Illustration 1). Position the pump on the machine and screw it on well without over-tightening (Illustration 2). Operate the pump by pressing on the handle (Illustration 3). If the container is filled to the maximum capacity line, it will require approximately 15 pumping actions on the handle (pulling and pressing) for the spray to begin flowing. If the liquid level is below capacity, it will require pumping more times. When the pressure drops, it will be necessary to pressurize the vessel again. This pressurization must be done 2 or 3 times to completely empty the liquid in the container.

## SAFETY RECOMMENDATIONS |





The sprayer is designed for use with insecticides, herbicides, fertilizers, preservatives, and detergents, but it is not designed to be used with chemical agents that degrade plastic materials (Illustration 6). Never open your equipment when pressurized. (Illustration 7). After use, empty the container and rinse it with clean water. (Illustration 8). Do not leave the container pressurized when not in use, avoid continuous exposure of your equipment to sun or freezing conditions, and avoid exposing the sprayer to heat sources (Illustration 9). Lubricate the gaskets periodically with grease or petroleum jelly. Do not leave your pressurized equipment unattended. \*Never store your equipment with any chemicals in the tank. Keep your equipment out of the reach of children. (Illustration 10). Never use your sprayer with gasoline, solvents, or petroleum-based products that are incompatible with your equipment (Illustration 11). Never spray toxic or harmful substances on people or animals (Illustration 12).

## THE OPERATOR: |

When working with toxic chemicals, the operator and any bystanders may need to wear a properly fitted respirator approved by NIOSH/MSHA for the chemical being used. Consult the product label. Breathing toxic chemicals can cause serious or fatal injury.

## HANDLING OF CHEMICALS: |

1. Chemicals can be harmful to individuals, animals and the environment if improperly used. In addition, some chemicals that are caustic, corrosive or poisonous should not be used in your sprayer. Carefully read the labels on chemical containers prior to use. Chemicals are classified into categories of toxicity. Pesticides regulated by the EPA, for instance, use signal words to indicate the product's potential to make you sick. "Caution" appears on pesticides found to be least harmful to humans. "Warning" indicates a product that is more poisonous than those in the "Caution" group. Pesticides with the signal word "Danger" on the label are very poisonous or irritating. They should be used with extreme care. Finally, pesticides labeled "Danger – Poison" are for restricted use only and generally must be used under the supervision of a certified applicator. Similarly, the EPA rates herbicides with the signal words "Caution", "Warning" and "Danger." Each category will have unique handling characteristics. Familiarize yourself with the characteristics for the category you are using.

When working with toxic chemicals, the operator and any bystanders may need to wear a properly fitted respirator approved by NIOSH/MSHA for the chemical being used. Consult the product label. Breathing toxic chemicals can cause serious or fatal injury.
2. Mix only compatible pesticides and/or herbicides. Wrong mixtures can produce toxic fumes. When handling chemicals and when spraying, make sure you are operating in accordance with local, state, and federal environmental protection rules and guidelines. Do not spray in windy conditions. To help protect the environment, use only the recommended dosage – do not overuse.
3. Do not eat, drink, or smoke while handling chemicals or while you are spraying. Never blow through nozzles, valves, pipes or any other component by mouth. Always handle chemicals in a well-ventilated area while wearing appropriate protective clothing and safety equipment. Do not store or transport chemicals with food or medicines, and never reuse a chemical container for any other purpose. Do not transfer spray materials to other containers, especially food and/or drink containers.
4. In case of accidental contact or ingestion of chemicals or in case of contamination of clothing, stop work and immediately consult the chemical manufacturer's instructions. If in doubt as to what to do, consult a poison control center or doctor without delay. Have the product's label available to read to or show the persons you consult. Clean all chemical spills immediately. Dispose of any residue in accordance with state or federal laws and regulations.



5. Keep chemicals out of reach of children, other unauthorized people or animals. When not in use, store chemicals in a safe place. Follow the manufacturer's recommendations for proper storage.
2. If you are unfamiliar with the risks associated with the particular chemical at issue, review the product label and/or material safety data sheet for that substance and/or consult the material manufacturer/supplier. You may also consult your employer, governmental agencies such as the EPA, OSHA and NIOSH and other sources on hazardous materials. The state of California and some other authorities, for instance, have published lists of substances known to cause cancer, reproductive toxicity, etc.

## **THE USE OF THE BACKPACK SPRAYER: |**

1. Inhalation of certain chemicals can cause susceptible persons to have an allergic or asthmatic reaction. Substantial or repeated inhalation of certain chemicals may cause respiratory disease, cancer, birth defects, or other reproductive harm. Control the chemical spray at the source where possible. Use good work practices, such as operating the unit so that the wind or operating process does not blow the spray back on the operator. Follow the recommendations of EPA/OSHA/NIOSH and occupational and trade associations with respect to proper usage. When the inhalation of the chemical being sprayed cannot be avoided, the operator and any bystanders may need to wear a respirator approved by NIOSH/MSHA for the type of chemical encountered. Consult the label of the chemical product being used.
3. After the use of some chemicals, especially agricultural pesticides, a notice must be posted on the treated area that a "Restricted Entry Interval" (REI) is in effect. See the product's label and any applicable governmental regulations.

## WARRANTY |

**Dear Client:** You have just acquired a **RoyalCondor**<sup>®</sup> sprayer, an investment backed by our quality promise. The Handy 5-, 7- and 10-liter sprayers have the following warranty:

**Period:** One (1) year from the date of purchase.

**Coverage:** Within the territory and period stipulated in this document. **RoyalCondor**<sup>®</sup> warrants its sprayer is free from defects in workmanship and materials. **RoyalCondor**<sup>®</sup> will correct any defects in workmanship and materials free of charge during the warranty period by replacing the defective part, not the entire unit. This warranty is offered under everyday use and maintenance conditions, subject to a specified period and specific exclusions.

### **Exclusions and limitations:**

The warranty does not cover the gaskets and O-rings of the sprayers. It does not cover missing parts. It does not cover incidental damage, loss, or breakdown resulting from normal wear or tear, misuse, modifications or changes to original components, neglect, improper maintenance or adjustments, or lubricants or spare parts that fail to comply with the manufacturer's specifications. **RoyalCondor**<sup>®</sup> reserves the right to change the assignment or specifications of any use or part without the need to make said changes to those already manufactured.

### **Buyer's liability:**

The user must demonstrate reasonable care in using, maintaining, and storing the sprayer. To obtain warranty service for any covered defect, the purchaser must deliver the product to the distributor where it was purchased, along with the purchase invoice. "The use of original spare parts increases the useful life of your sprayer."

**Guarantor:** **RoyalCondor**<sup>®</sup>, Registered trademark of PROGEN S.A. / KR 3 56 07 Zona Industrial Cazucá, Soacha, Cundinamarca (Colombia) | PBX:(60-1) 794 0030

**Ownership and Warranty Card**



Invoice No: \_\_\_\_\_ Date of Purchase: \_\_\_\_\_

Point of Sale: \_\_\_\_\_

Name of Owner: \_\_\_\_\_

Address: \_\_\_\_\_

Municipality or City: \_\_\_\_\_

Department: \_\_\_\_\_

Personal ID Number: \_\_\_\_\_

Telephone: \_\_\_\_\_

Unit Serial Number: \_\_\_\_\_



**WARNING**

This product contains chemicals known to the State of California to cause cancer, birth defects or other reproductive harm.

0458-408-8621-A  
englisch / spanisch USA



## WARRANTY No.:



PROGEN S.A. Producciones Generales S.A.  
KR 3 56 07 Zona Industrial Cazucá  
Soacha, Cundinamarca (Colombia)  
**PBX:** (60-1) 794 0030  
**Sales and Customer Service:** Ext.: 1131 al 1134  
**Technical Service:** Ext.: 1136 Cel.: 313 499 5049  
[www.royalcondor.com](http://www.royalcondor.com)  
[progen@progen.com.co](mailto:progen@progen.com.co)

At **RoyalCondor**<sup>®</sup>, we love our planet and have printed this Manual on  **Smurfit Kappa** eco-friendly paper.



**FSC** | Responsible forest management certification